

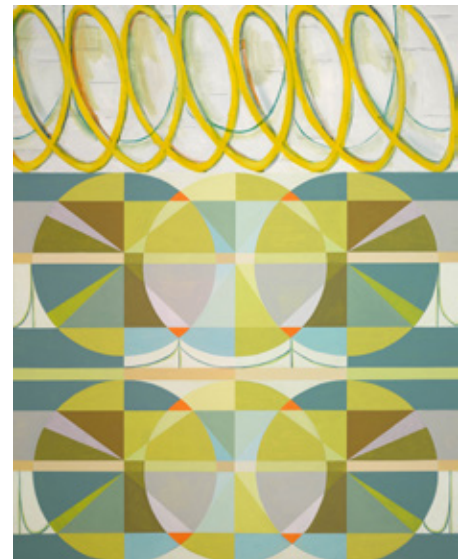
Liang Manqi: *Concept of Parallel Events II*

Since the start of her professional artist career in 2013, Liang Manqi has been continuously engaged in the practice of abstract painting and spatial projects centered around topics such as space, color, and geometry. Her works emphasize the exploration of the transformation processes between rationality and sensibility, explicit and implicit dimensions, aiming to approach the underlying logic of things through self-analysis and allowing it to naturally reside within the paintings. This has resulted in a highly distinctive visual expression style.

The series “*Concept of Parallel Events*” presents the artist’s exploration of the emergence of things in parallel or conflicting time and space, as well as their interwoven states. The artworks take on a new visual form, as Liang Manqi adds another layer of dimensional space to her continued personal style. In the paintings, there are sketch-like elements delineated with materials such as oil pastels and charcoal, which appear in the same frame with compositions of color and geometry in different proportions, creating an engaging visual contrast for the viewers.

Liang Manqi refers to these two-dimensional images as “Implicit Space” and “Explicit Space,” corresponding to the realms of inner sensibility and external rational analysis, respectively. It’s worth noting that the coexistence of these two visual languages is not entirely consistent. What began as initially evenly distributed and parallel dialogues gradually evolved into interwoven, alternating, and differently proportioned arrangements, reflecting the artist’s evolving thoughts and a curious approach to creating fresh visuals during the artistic process.

The artist aims to use these visual contemplations to reflect upon herself and even the current situations that people commonly find themselves in. In her observation, people of the same era often need to engage in multiple professions simultaneously or exist in various states within a specific field.



The Conception of Parallel Event No.21, 2023

What particularly catches her attention is that the key to these interconnected states doesn’t seem to be concrete or explicit; it can be understood as an abstract presence that permeates both the individual and their environment. Through abstract painting, Liang Manqi attempts to present this multi-dimensional space relationship that is both conflicting and harmonious within the same individual, incorporating two radically different painting styles into a single artwork, creating a visual style full of unknown possibilities. When viewers quietly contemplate her artwork, the two forms of expression, outward and inward, converge within the same two-dimensional canvas, running parallel and interwoven, and the depth of meaning is thought-provoking.

39⁺ ART SPACE



The Conception of Parallel Event No.14, 2023

As for whether the artist is painting or writing, and whether the viewers are observing or reading, all become entirely open and free. There's no need to define the artwork; what remains is the pure sensory experience of human eyes perceiving forms, colors, and brushstrokes in multi-dimensions, corresponding to the unique inner states of individuals and broader contemporary themes.

Original text by Zhang Jingya